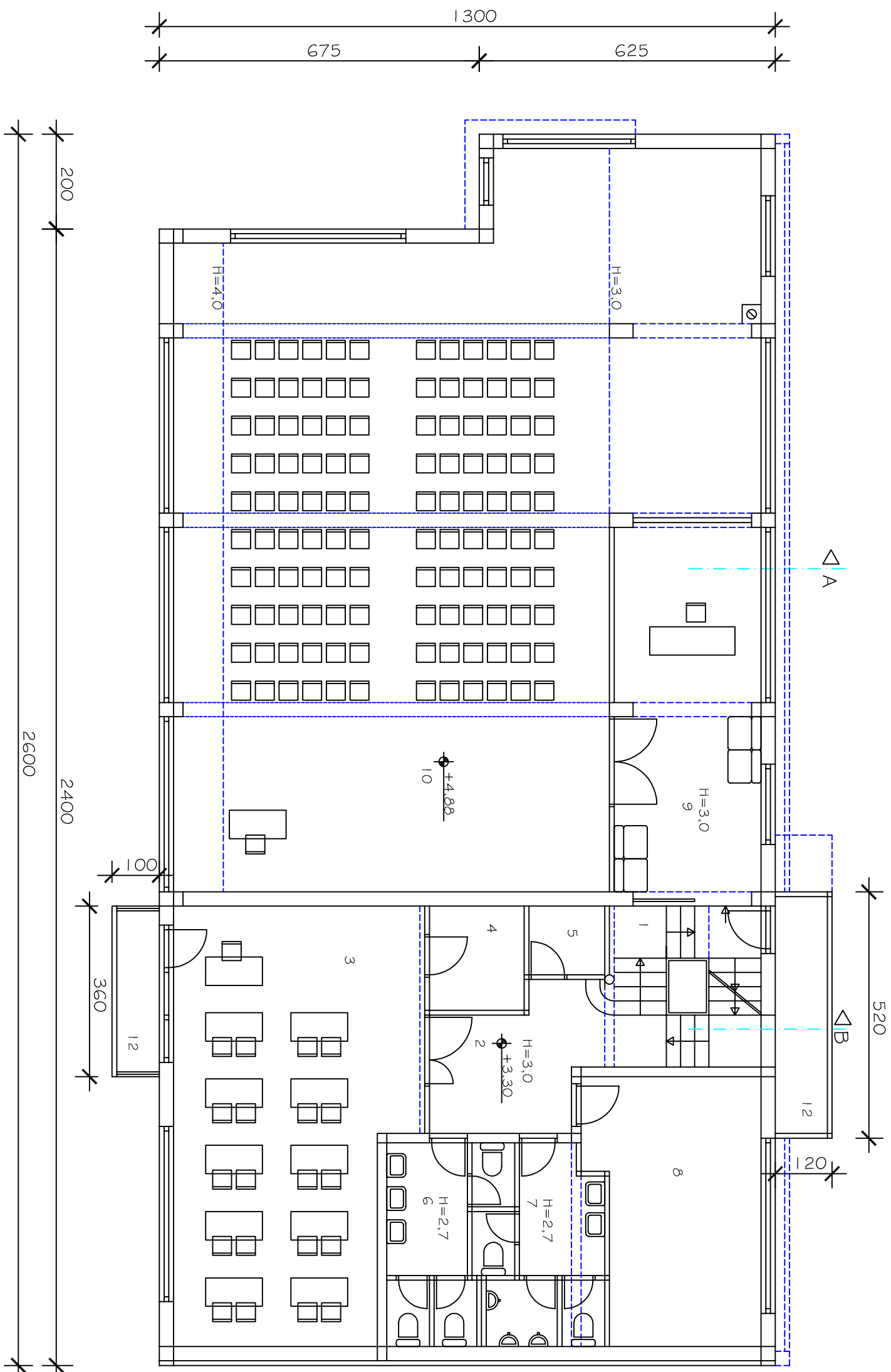


- 1. ulazni podest 2,97 (3,96)m²
- 2. vjetrobran 4,05m²
- 3. hall 23,81m²
- 4. stubište 10,54m²
- 5. prijavnica 4,86m²
- 6. ured 22,76m²
- 7. wc - M 4,61m²
- 8. wc - Ž 2,52m²
- 9. garderoba 22,42m²
- 10. tuševi 8,54m²
- 11. garaža za vatrogasna vozila 157,38m²
- 12. kotlovnica 20,74m²

ukupno: 285,20 (286,19)m²
 BP: 324,50m²

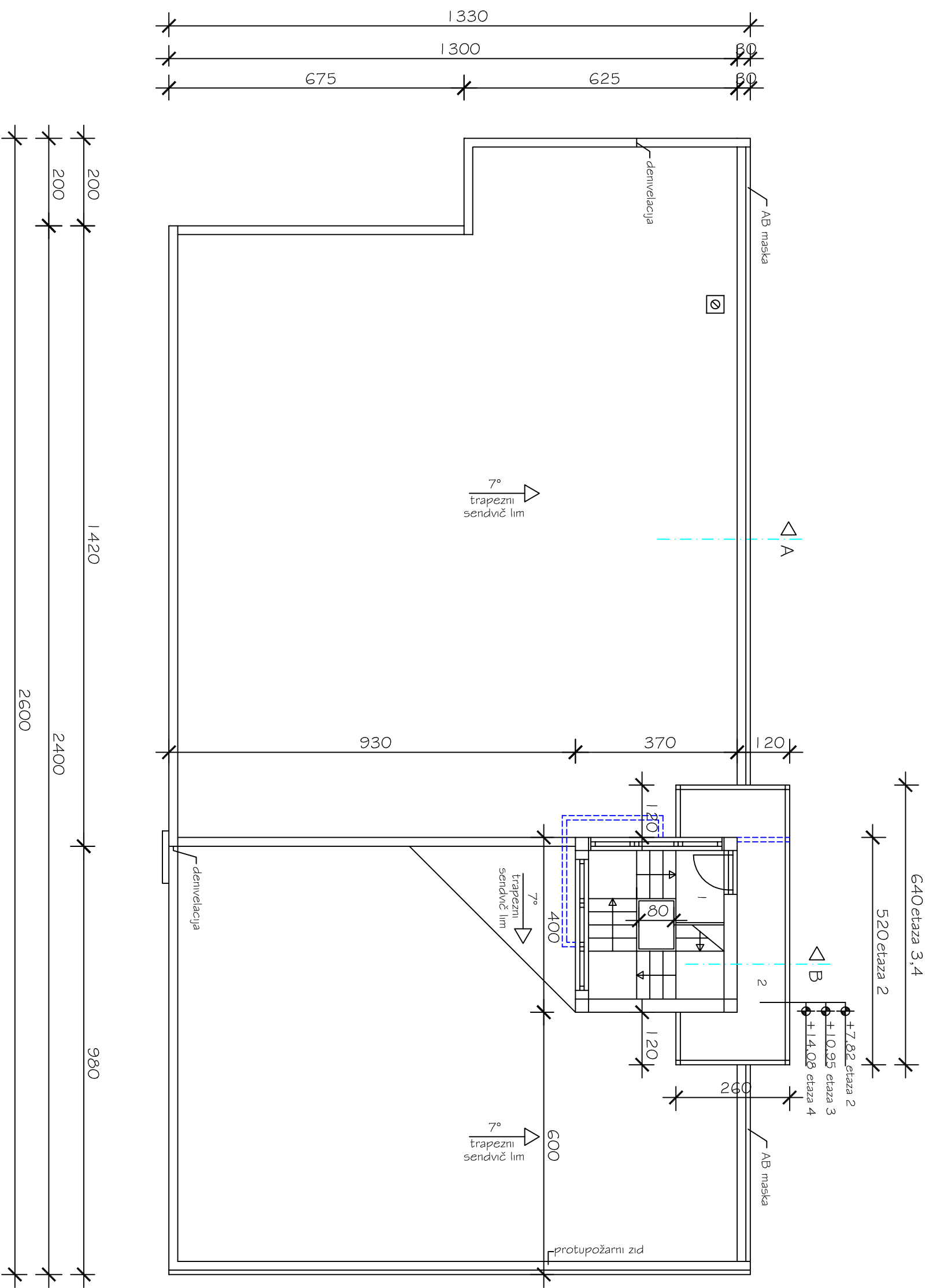
tlocrt prizemlja
 M 1:100



1. stubište 10,54m²
2. hall 9,84m²
3. predavaonica 44,79m²
4. spremište 4,44m²
5. pribor za čišćenje 2,32m²
6. wc - Z 8,46m²
7. wc - M 9,19m²
8. trim kabinet 19,44m²
9. hall / garderoba 24,69m²
10. višenamjenska dvorana 157,58m²
11. balkon 0,81 (3,24)m²
12. balkon 1,38 (5,50)m²

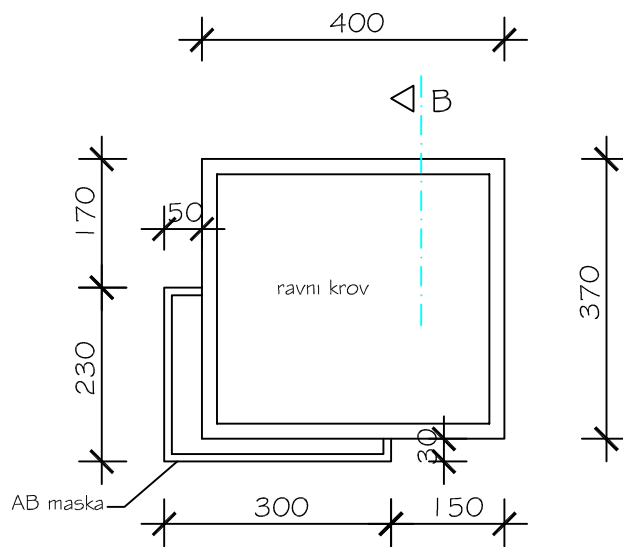
ukupno: 293,48 (300,03)m²
 BP: 324,50m²

tlocrt kata
 M 1:100

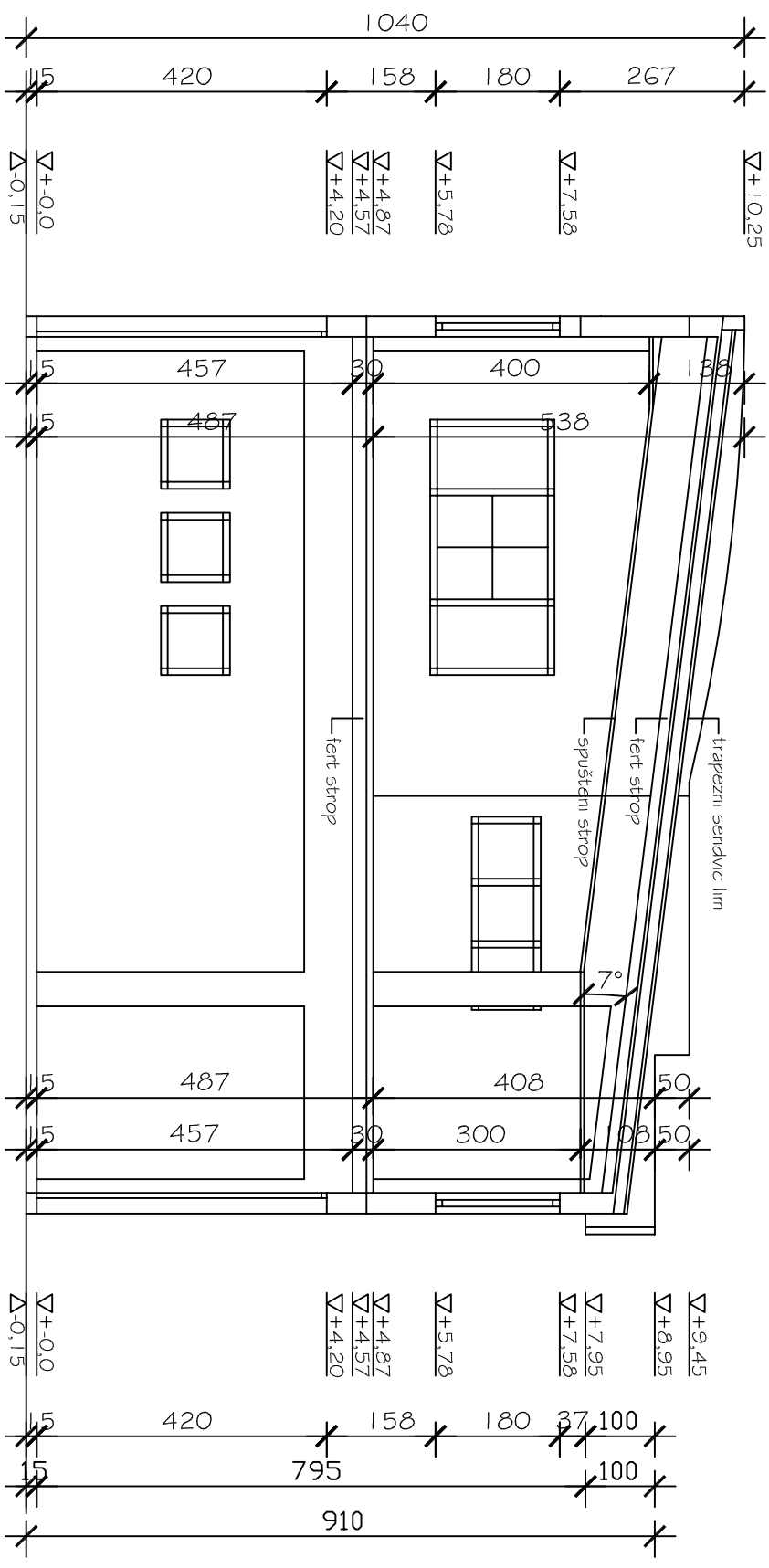


etaža 2:	1. stubišče 10,54m ²
	2. balkon 1,73 (6,93)m ²
	ukupno: 12,27 (17,47)m ²
	BP: 14,80m ²
etaža 3:	1. stubišče 10,54m ²
	2. balkon 2,42 (9,68)m ²
	ukupno: 12,96 (20,22)m ²
	BP: 14,80m ²
etaža 4:	1. stubišče 10,54m ²
	2. balkon 2,42 (9,68)m ²
	ukupno: 12,96 (20,22)m ²
	BP: 14,80m ²
	sveukupno: 616,87 (644,13)m²
	BP ukupno: 693,40m²

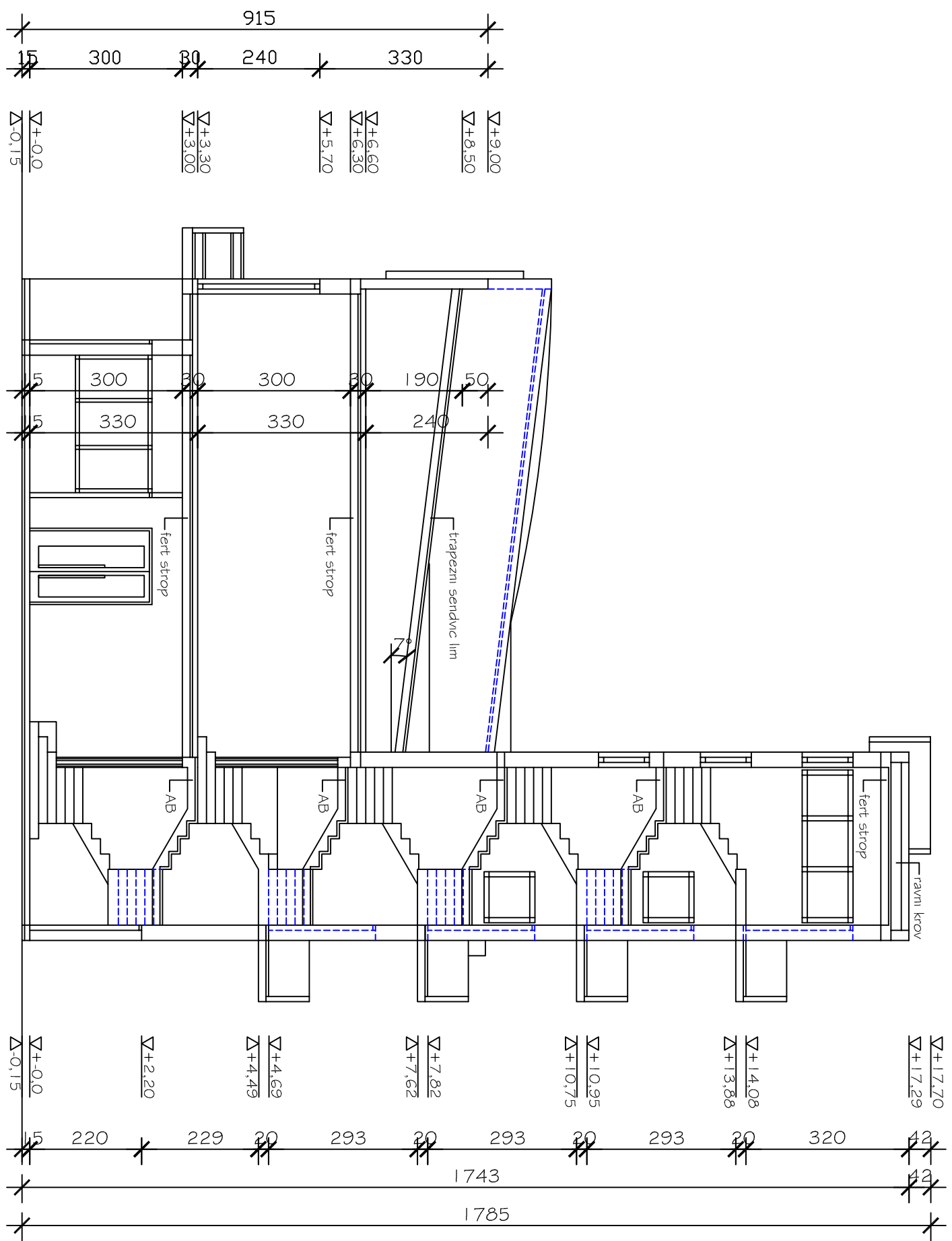
tlocrt tornja i krovnih ploha
M 1:100



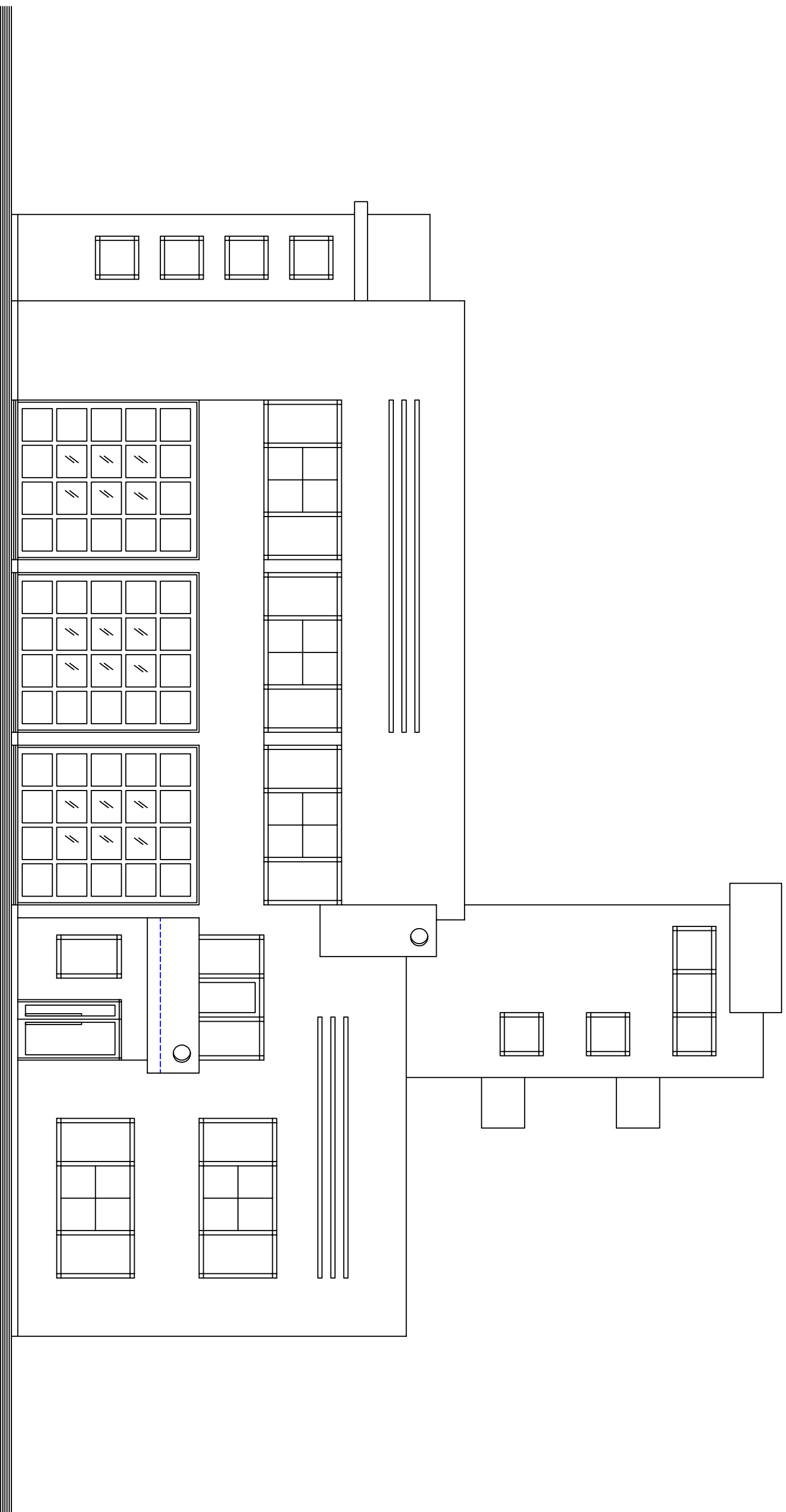
tlocrt ravnog krova tornja
M 1:100



Presjek A
M 1:100

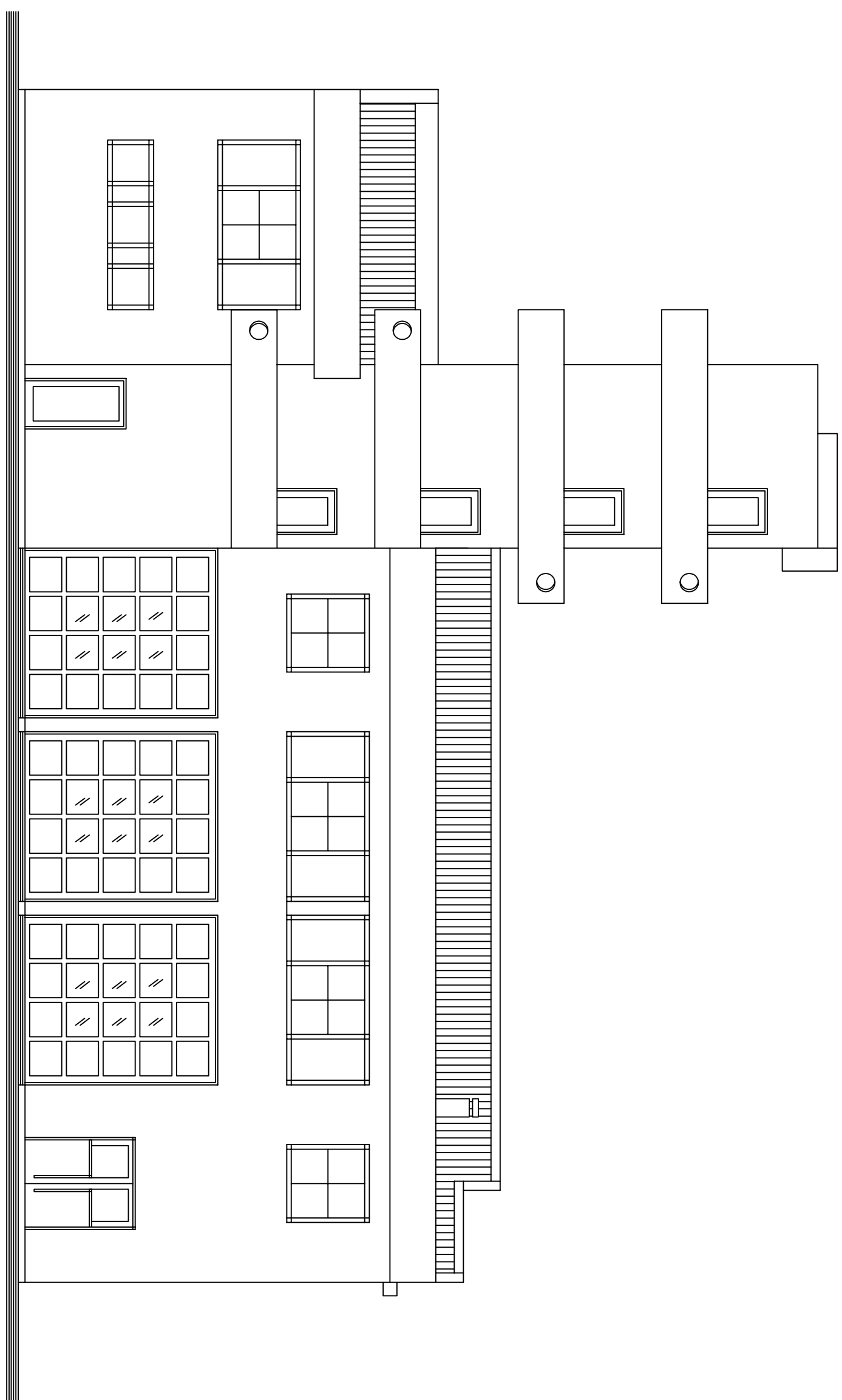


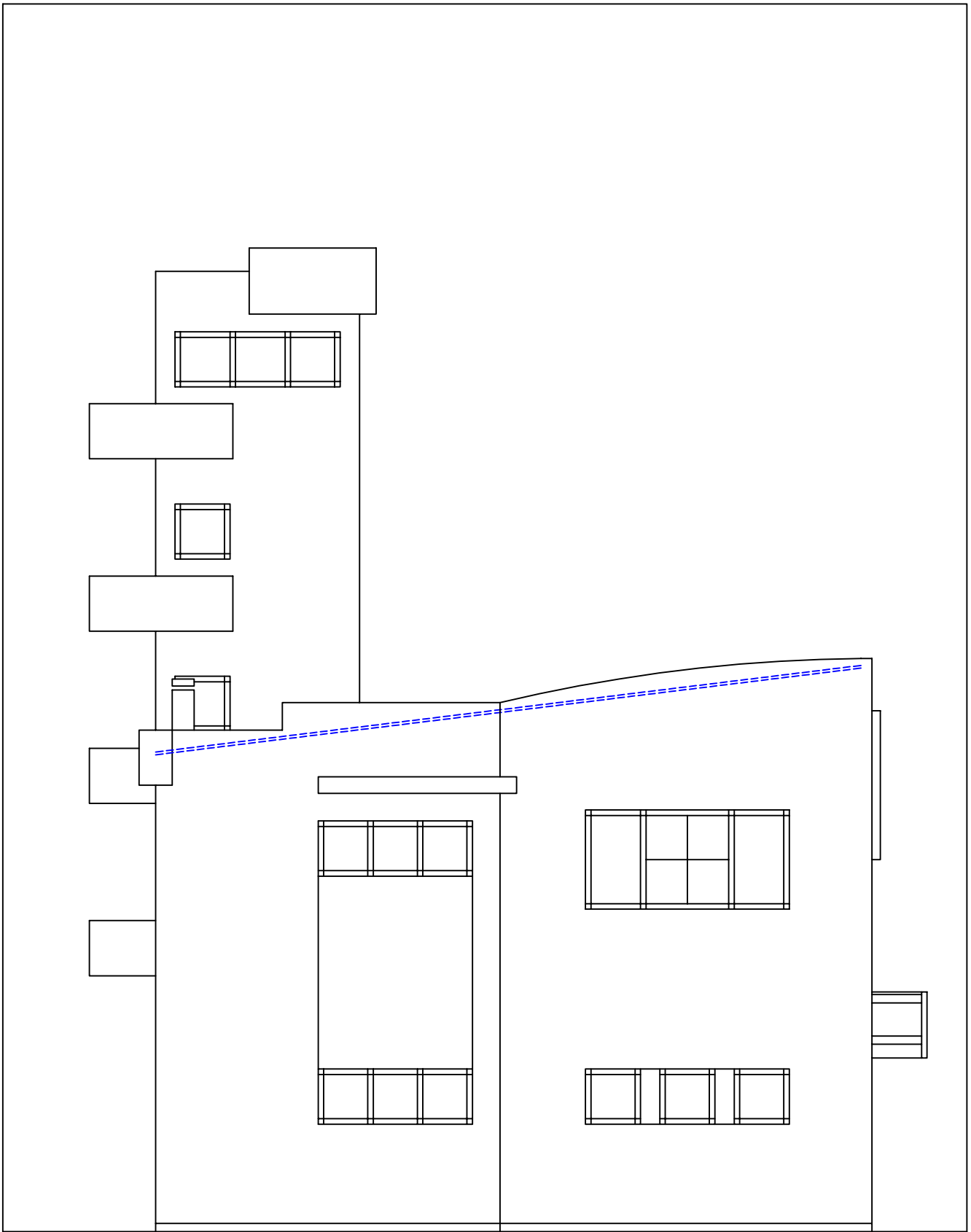
Presjek B
M 1:100



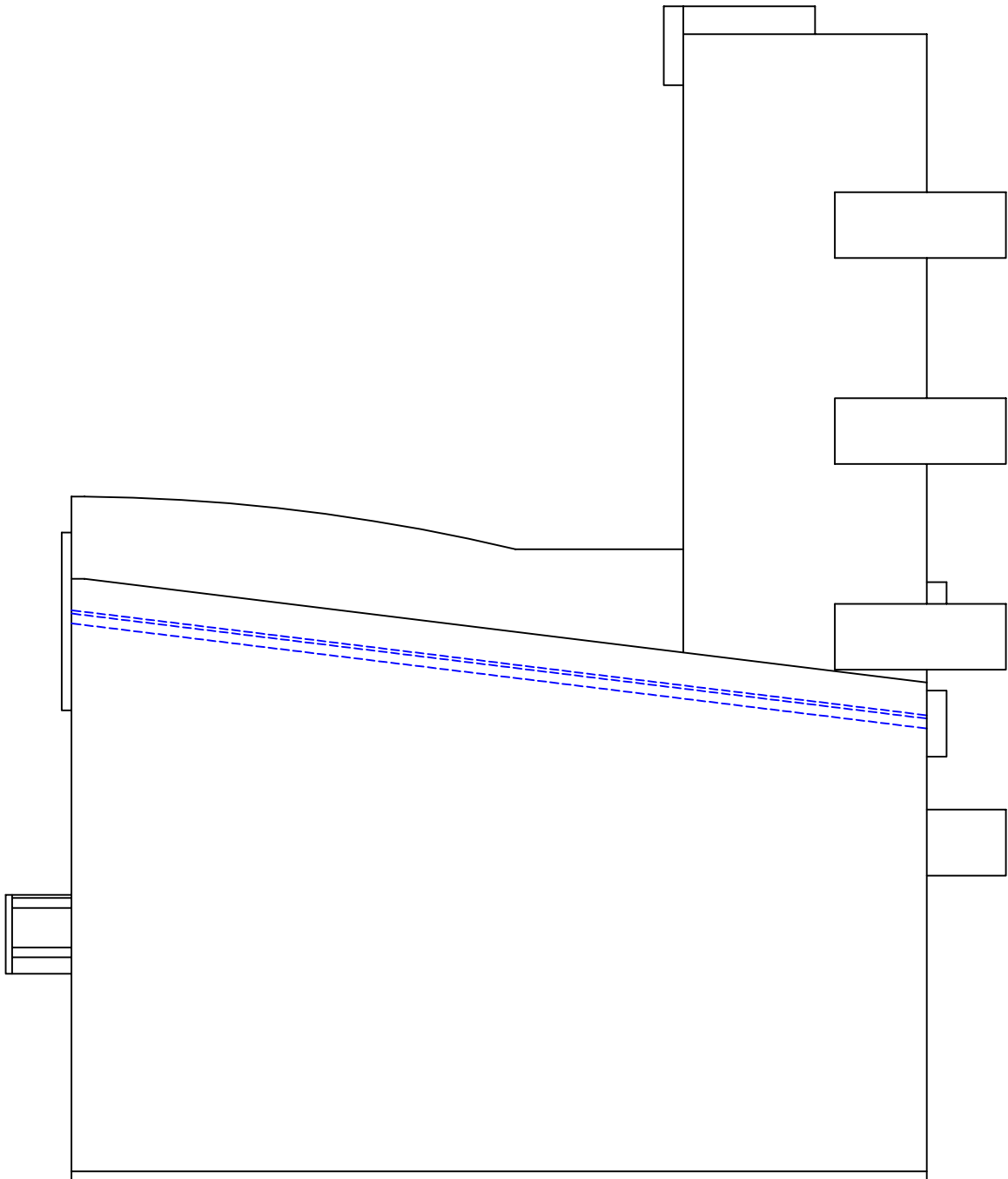
sjeveroistočno pročelje
M 1:100

Jugozapadno pročelje
M 1:100





jugoistočno pročelje
M 1:100



sjeverozapadno pročelje
M 1:100